



# CLASSIC UNIVERSAL LASER SYSTEM

## FSM-0PLW-140

This system fits all trigger guards and is completely universal. The new shortened design allows more versatility in nylon holsters and a more stable platform. The proven round body design ensures accuracy and durability.

- Fits all trigger guards
- 500-yard range at night
- Ambidextrous Slide Switch
- Adjustments for windage and elevation
- Exclusive FSL Technology
- Made from T6 aluminum
- 650nm laser module
- Full 5mw of power
- One Year Limited Warranty

### PARTS INCLUDED

2 Hex Wrenches



2 Batteries



Laser Sight with Universal Mount



24 Pre-Shaped Polymer Inserts

**DANGER**



LASER LIGHT  
AVOID DIRECT EYE EXPOSURE  
POWER OUTPUT <5mw  
WAVELENGTH 630-670nm  
CLASS IIIa PRODUCT

RoHS



6 89706 20975 9

FSM-0PLW-140

# CLASSIC UNIVERSAL LASER SYSTEM

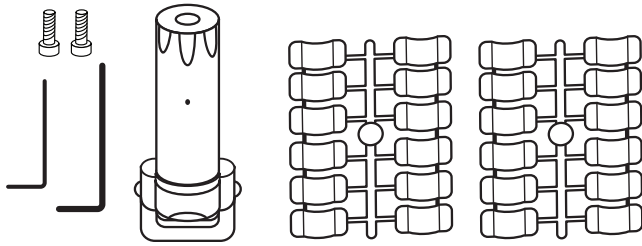


[www.laserlyte.com](http://www.laserlyte.com)

**Accuracy Defined**

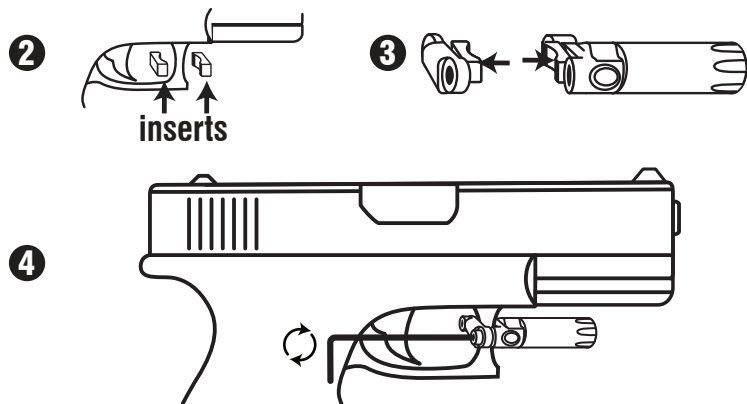
# Classic Universal-Laser System

FSM-OPLW-140



## Installation

- 1 UNLOAD YOUR FIREARM!**
- Using the provided inserts match the inside of the trigger guard. (see chart for recommended inserts for popular model pistols)
- Place the inserts inside the clamps for the trigger guard and the laser.
- Put the clamps around the trigger guard and tighten down screws.



### Recommended inserts -

Handgun	Trigger Guard Clamp	Laser Clamp
Gov't model 1911 Frames	B	A or L
Hi-Power Frames	B	F or L
Beretta 92	D	F
Taurus 92	D	H
Sig 220, 226, 228	C	L
Ruger P Series	H	F
Glock (all models)	I	K
Smith & Wesson (round trigger guard)	H	H
Smith & Wesson (square trigger guard)	H	D
Smith & Wesson (sigma trigger guard)	K	I
Smith & Wesson (revolver)	B	F
HK USP (snip ears off insert "C" to fit)	C	C
Takarev 213	D	C
Makarov .380	B	A

## Custom Fitting

- 1** Insert "J" may be shaped to match your guns trigger guard. Use a file and remove material slowly until it fits.
- 2** If your rounded trigger guard causes the laser to move put "super glue" onto the trigger guard where the clamp will make contact. To remove "super glue" use "finger nail polish remover" and there will be no damage to gun.

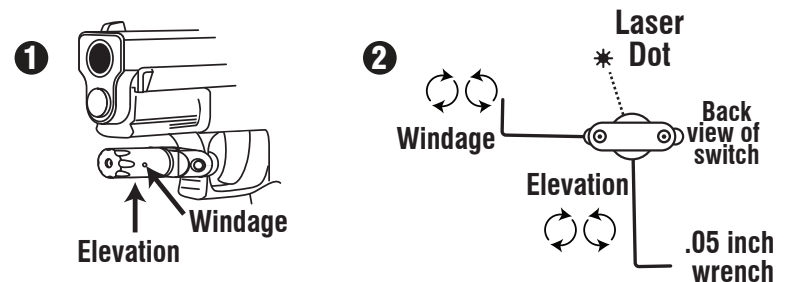
## Activation

- 1** To turn "On" the laser, press either side of the switch in until it clicks. To turn "Off" press the switch back to the centered position.



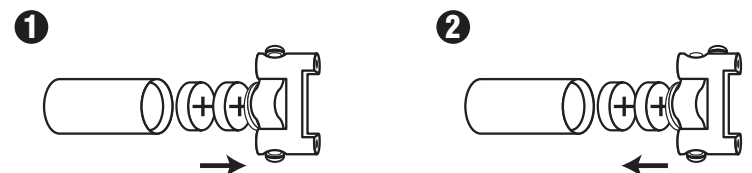
## Sight In

- 1** Locate the windage and elevation screw holes.
- 2** Use the provided .05 Allen wrench to adjust the laser in relation to the gun sights. End in a clockwise direction.
- 3** Make final adjustments at shooting range.



## Battery Replacement - 2-A-76 (LR-44, G-13)

- 1** Unscrew slide switch/Clamp and remove old batteries.
- 2** Insert 2 - A76 batteries with positive facing slide switch. Screw switch back into laser.



**WARRANTY:**  
One Year Limited  
Warranty.



**LASERLYTE**<sup>®</sup>  
A Division of P&L Industries  
101 Airpark Road - Cottonwood, AZ 86326  
Phone 928-649-3201 - Fax 928-649-3970  
www.LaserLyte.com