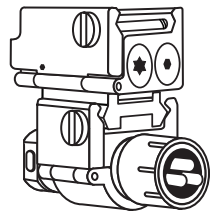


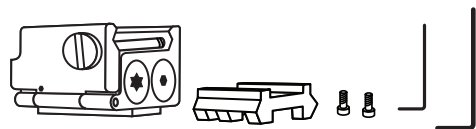


Sub Compact Laser and Flashlyte System

LL-1

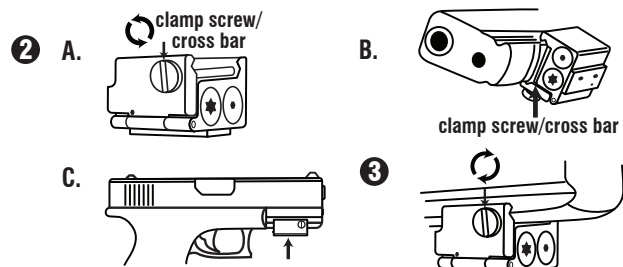


Laser Instructions



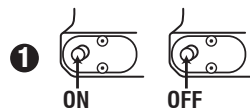
Installation

- 1 UNLOAD YOUR FIREARM!
- 2 A. Loosen the clamp screw/cross bar.
B. Align clamp screw/cross bar with cross cut on rail.
C. Press the laser onto the rail.
- 3 Tighten the clamp screw/cross bar until snug.



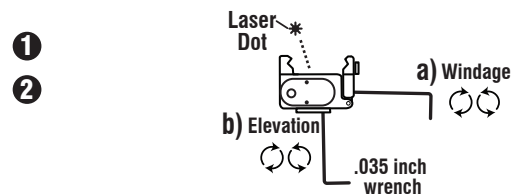
Activation

- 1 Push orange button on the back - Once to turn ON and once to turn OFF



Sight In

- 1 Locate the a)windage and b)elevation screw holes.
- 2 Use the provided .035 Allen wrench to adjust the laser in relation to the gun sights. End in a clockwise direction.
- 3 Make final adjustments at shooting range.



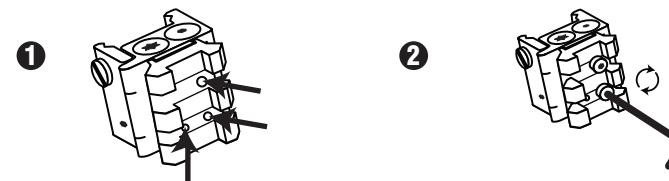
Battery Replacement

- 1 Unscrew battery cap and remove batteries.
- 2 Insert 3-393 batteries with positive facing the battery cap and screw cap back in.

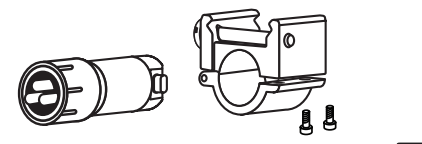


Accessory Rail

- 1 Put the accessory rail on the bottom of the laser and align the three holes.
- 2 Insert the 2 provided screws and tighten down with the Allen wrench.

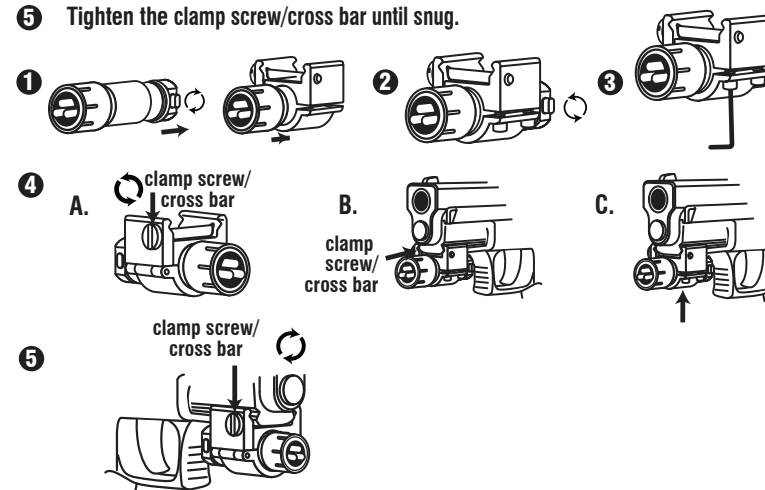


Flashlyte Instructions



Installation

- 1 Unscrew switch and slide into mount.
- 2 Screw the switch back into the flashlyte.
- 3 Insert Screws into mount and tighten.
- 4 A. Loosen the clamp screw/cross bar.
B. Align clamp screw/cross bar with cross cut on rail.
C. Press the flashlyte onto the rail.
- 5 Tighten the clamp screw/cross bar until snug.



Activation

- 1 To turn "On" the laser, press either side of the switch in until it clicks. To turn "Off" press the switch back to the centered position.



Battery Replacement

- 1 Unscrew slide switch and remove old batteries.
- 2 Insert 4 - A76 batteries with positive facing slide switch. Screw switch back into flashlyte.



WARRANTY:
One Year Limited
Warranty.



LASERLYTE[®]
A Division of P&L Industries
101 Airpark Road - Cottonwood, AZ 86326
Phone 928-649-3201 - Fax 928-649-3970
www.LaserLyte.com